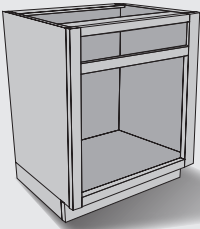
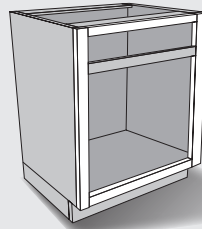


You have these conditions:

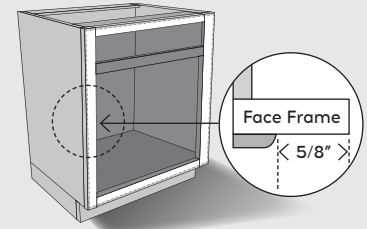
No Existing Doors



Framed Cabinet



Minimum 5/8" Clearance On All Sides of Opening



NOTE 1: Your new doors will overlap the cabinet frames by 1/2" (0.5").

NOTE 2: If you have any cabinets with less than 5/8" (0.625") frame clearance, please call for assistance.



Determine your door & drawer front sizes:

1. Download our helpful form to record your information the same way our website will ask for it. [Measurement Form](#)
2. Measure your cabinet opening to the closest 1/16" (0.0625"). Measure width first, then height.

For all drawer fronts and door openings less than 22" wide, order 1 door.

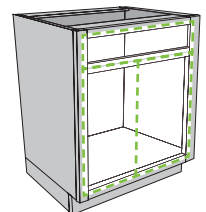
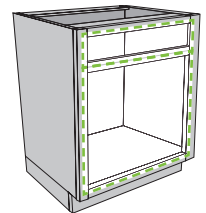
- Add 1" to the cabinet opening width and height.

For door openings greater than 22" wide, order 2 doors.

- Add 7/8" (0.875") to cabinet opening width, then divide by 2 to determine the door width.
- Add 1" to the opening height to get the door height.

Write the dimensions and quantities you need on the measurement form.

3. Double check that you haven't missed a part. The number of parts on the form should match the number of doors and drawers you need.



What to order:

1. Order 1/2" overlay hinges.
2. Order doors and drawer fronts with the dimensions determined above.

We're here to make it easy. Call: 844-MY-DIY-KIT | Support@KitchenMakeover.com