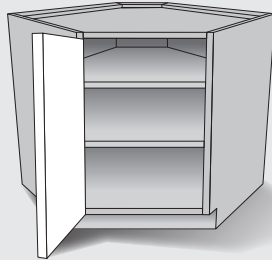
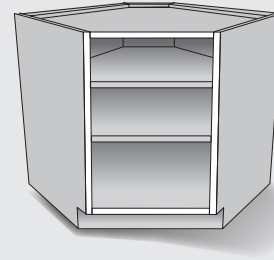


You have these conditions:

**Angle Corner
"45 Degree"**

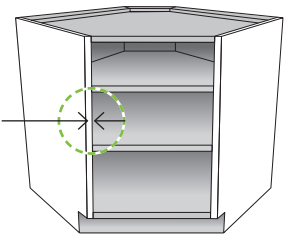


Frameless Cabinet



Determine your door front sizes:

1. Download our helpful form to record your information the same way our website will ask for it. [Measurement Form](#)
2. Measure your end panel thickness. It will be 5/8" (0.625") or 3/4" (0.75").
3. Measure your cabinet opening to the closest 1/16" (0.0625").

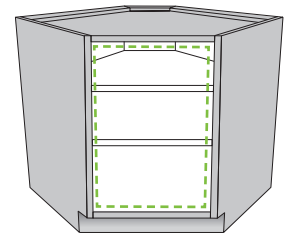


To determine the width:

- Measure the width of opening and record on measurement form.

To determine the height:

- If you have an adjacent door next to the cabinet opening you want to match, measure it's height and record on measurement form.
- If you have no adjacent doors to match, measure the height of the opening and add 1".



4. Write the dimensions of the door you need on the measurement form.



What to order:

1. Order a door to cover opening with the dimensions determined above.
2. Order two (2) of the accessory item: **"I-O611: Hinge - 45 Deg Self-Closing Hinge FRMLSS."**

We're here to make it easy. Call: 844-MY-DIY-KIT | Support@KitchenMakeover.com